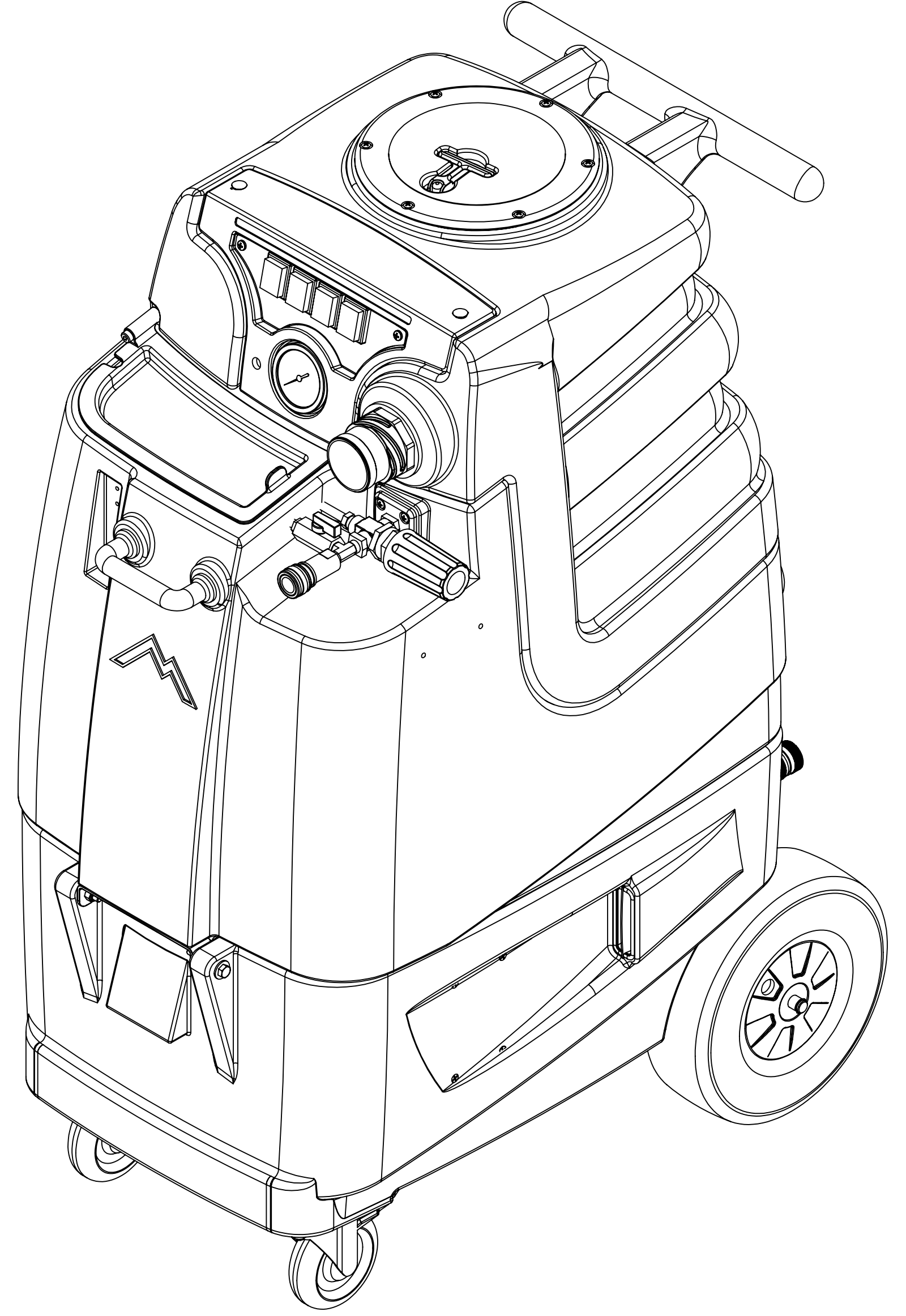


ITEM NO.	PART NO.	DESCRIPTION	QTY.	MSRP
1	H212	flat washer, 9/16"ID x 1 1/16"OD, AN960-C916	2	
2	B199	coupler, 1/2" fpt x 1/4" fpt	3	
3	B644	adapter, brass, 1/2" barb x 1/4" mpt	2	
4	B173	ferrule, 1/2", brass	6	
5	PH615-19	sol hose, 1/2", 3045psi, black	1	
6	H273	nut, kep, #10-32 zinc	14	
7	H210	washer, 1/4" flat, s/s	30	
8	H186	screw, 10-32 x 3/4, phil flat full thread	6	
9	C381	pump out, 115v	1	
10	PH615-37	sol hose, 1/2", 3045psi, black	1	
11	B160	adapter, brass, 1/2" barb x 3/8" fsw, ball end	3	
12	H042	c-clip, 12mm, external	2	
13	H109	wheel, 10", foam filled	2	
14	H232	axle, 19.60" x .50"	1	
15	P511	LX series base	1	
16	P514	vent, side, LTD	2	
17	H668	caster, 4", black hub & gray tread	2	
18	H342	bolt, 1/4-20 x 1" hex head, s/s	8	
19	H216	nut, lock, 1/4-20, nylon insert, s/s	14	
20	H202	bolt, 1/4x20x3/4" hex head	4	
21	B246	plug, brass, 3/8" mpt, hex	1	
22	PH615-23	sol hose, 1/2", 3045psi, black	1	
23	B186	elbow, brass, 90 deg, 3/8"mpt x 3/8" fmpt	4	
24	B142	coupling, brass, 1/4" fpt x 1/4" fpt	2	
25	B105	bushing, brass, 3/8"mpt x 1/4"	3	
26	B260A	qd, brass, 1/4" mqd x fpt	2	
27	B259A	qd, brass, 1/4" fqd x fpt	2	
28	C313A	pump, CAT, 50-500 PSI, 120/240v	1	
29	B652	elbow, brass, 90 deg, 3/8"mpt x 1/4"mpt	1	
30	AH184	hose, pulse, 3/8" x 14-1/2" (OAL)	1	
31	B107	nipple, brass, 1/4"m, hex	4	
32	B113	tee, brass, 1/4" fpt	1	
33	B643	adapter, brass, 3/8" fnpt x 1/4" mnpt	1	
34	PH615-32	sol hose, 1/2", 3045psi, black	1	
35	B123	adapter, brass, 1/2" barb x 1/4" fpt	1	
36	G068	bumper, 7/8" x 1/4" head	2	
37	H486	latch, front	2	
38	H230	screw, 10-32 x 1/2" phil pan head, s/s	18	
39	H221	nut, lock, 1/2" steel	2	
40	H220	fitting, strain relief, cord	2	
41	E550	power cord, pigtail, 30', 12/3, black	2	
42	E564	controller, circuit light	1	
43	E369	hour meter, panel mount, analog	1	
44	H039	plate, auto fill/ pump out	1	
45	B205B	QD, 1/2" npt x 3/4" mgh, pump-out	2	
46	B204	qd, 3/4" female x female garden hose	2	
47	B656A	ball valve, 1/2" m x 1/2" f	1	
48	H299	washer, 1 1/16" id x 1-1/2" od x .075, s/s	9	
49	B303	nipple, 3" x 1/4" npt x 1/4" npt	3	
50	B167	street elbow, 1/2" fpt x 1/2" mpt	1	
51	B198	adapter, 3/4" fgh x 1/2" mpt, w/ gasket	1	
52	H541A	valve, float, autofill	1	
53	B109	adapter, brass, 1/4" barb x 1/4" mpt	2	
54	B103	elbow, brass, 90 deg, 1/4"mpt x 1/4" fpt	1	
55	B216	nipple, brass, 3/8" x close	2	
56	B210	bushing, brass, 1/2"mpt x 3/8" fpt, hex	2	
57	B119A	filter, strainer, 1/2"	1	
58	H213	washer, 1/4" lock, s/s	8	
59	H201	bolt, 1/4-20 x 1/2", hex head, zinc	2	
60	H378	bracket, front hinge, sp/fb	1	
61	H204	bolt, 1/4-20 x 1 3/4" hex head, s/s	2	
62	G036	cap, 2.5" threaded, tethered	1	
63	H485	handle, aluminum grip, black	1	
64	G052	washer, buna 1-1/8" od x 3/16" id	2	
65	H211	washer, 1/4" id x 1" od, flat, s/s	2	
66	H768	bolt, 1/4-20 x 3/4" serrated hex flange, zinc	2	
67	P509	LX series sol tank	1	
68	H650	bolt, 5/16" shoulder x 1-1/2" lg, alloy	1	
69	P513	solution tank lid, LTD	1	
70	H390A	bracket, "L"	2	
71	H770	bolt, 1/4-20 x 1/2" serrated hex flange, zinc	4	
72	H124	Cuff-Lynx, 2" mpt x 2" female cuff	2	
73	PH634-20	sol hose, 1/4", 300 PSI	1	
74	C313C	regulator, 450 psi, silver spring	1	
75	H484	plate, mounting, QD	1	
76	AH203	hose, pulse, 3/8" x 34", 3/8" fitting (OAL)	1	
77	B135	tee, brass, 1/4" mpt	1	
78	AH120	sol hose, 28" x 1/4", 1/4 fpt	1	
79	B102	qd, brass, 1/4" f x 1/4" fpt	1	
80	B656	ball valve, 1/4"	1	

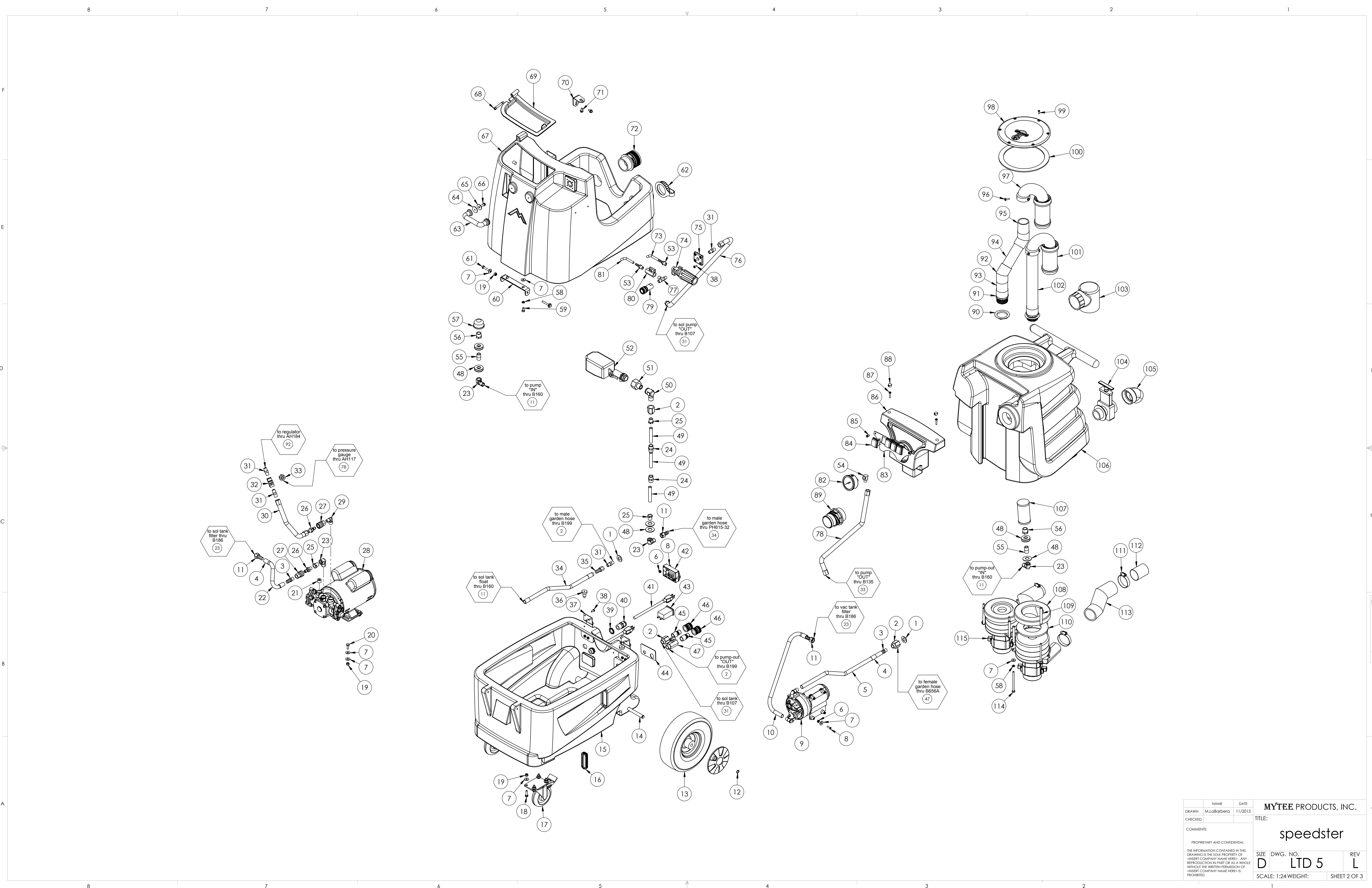
ITEM NO.	PART NO.	DESCRIPTION	QTY.
81	PH634-36	sol hose, 1/4", 300 PSI	1
82	H308D	gauge, pressure, 2000 PSI	1
83	H074	plate, switch, lfd5, lfd12	1
84	E515	switch, rocker, 2 position	4
85	H029	plastite screw, 10 x 1/2"	2
86	P512	LX series switchbox	1
87	H031	plastite screw, 10 x 1"	2
88	H434	plug, vent, heyco, 1/2"	2
89	H135	Cuff-Lynx, 2" m cuff x 2" mpt	1
90	H314	nut, lock, 1-1/2", steel	2
91	P520	adapter, pvc, 1-1/2" mpt x 1-1/2" fms	2
92	P503	adapter, 1.5" pvc, 45 deg, fslip x fslip	2
93	PH633-4	pipe, pvc, 1-1/2"	1
94	PH633-6	pipe, pvc, 1.5"	1
95	PH633-03	pipe, pvc, 1-1/2"	1
96	H343	screw, 10 x 5/8" hex head, zinc	6
97	P755	elbow, U, 180, 1-1/2", float	2
98	G090	lid, vac tank, clear, 7"	1
99	H304	screw, #8 x 5/8 phil oval, s/s	6
100	G091	gasket, 7", vac lid	1
101	H490	float, 2" / 1.5" ball style	2
102	PH633-13	pipe, pvc, 1-1/2"	1
103	A926	elbow, inlet assembly 2"	1
104	H225	valve, drain, 1-1/2"	1
105	H226	spout, drain, 45 degree	1
106	P510	LX series vac tank	1
107	H333	mesh filter, auto dump, 1/2" npt	1
108	G004	gasket, vacuum motor	2
109	H503	vac support, 3 stage, 3.25", no thrs	6
110	G004-A	gasket, vacuum motor	2
111	H217	clamp, hose, 2-1/4 dia	4
112	H194	coupler, 2" dia x 2.5" length, s/s	2
113	PH628-7	vac hose, 2", black, wire reinforced	2
114	H096	bolt 1/4-20 x 4, s/s	6
115	C302A	vac motor, 3-stage hp, 120V, 145"	2

ITEMS NOT SHOWN

PART NO.	DESCRIPTION	QTY	MSRP
E530	power cord, ext 50', 12/3, black	2	
E355	harness, electrical	1	
G008	piglet filter	1	
G076	filter bag, 3.5" metal o-ring, mesh bag	1	
H110	Cuff-Lynx, 2: hose x 2" fem swivel	1	
H141	Cuff-Lynx, 2: x 1.5" reducer	1	
H230	screw, 10-32 x 1/2" phil pan head, s/s	2	
H375	hanger, wire formed, hose	1	
P568A	cord lock, S-type	2	
ADM Cuff Lynx	Cuff-Lynx instruction guide	1	

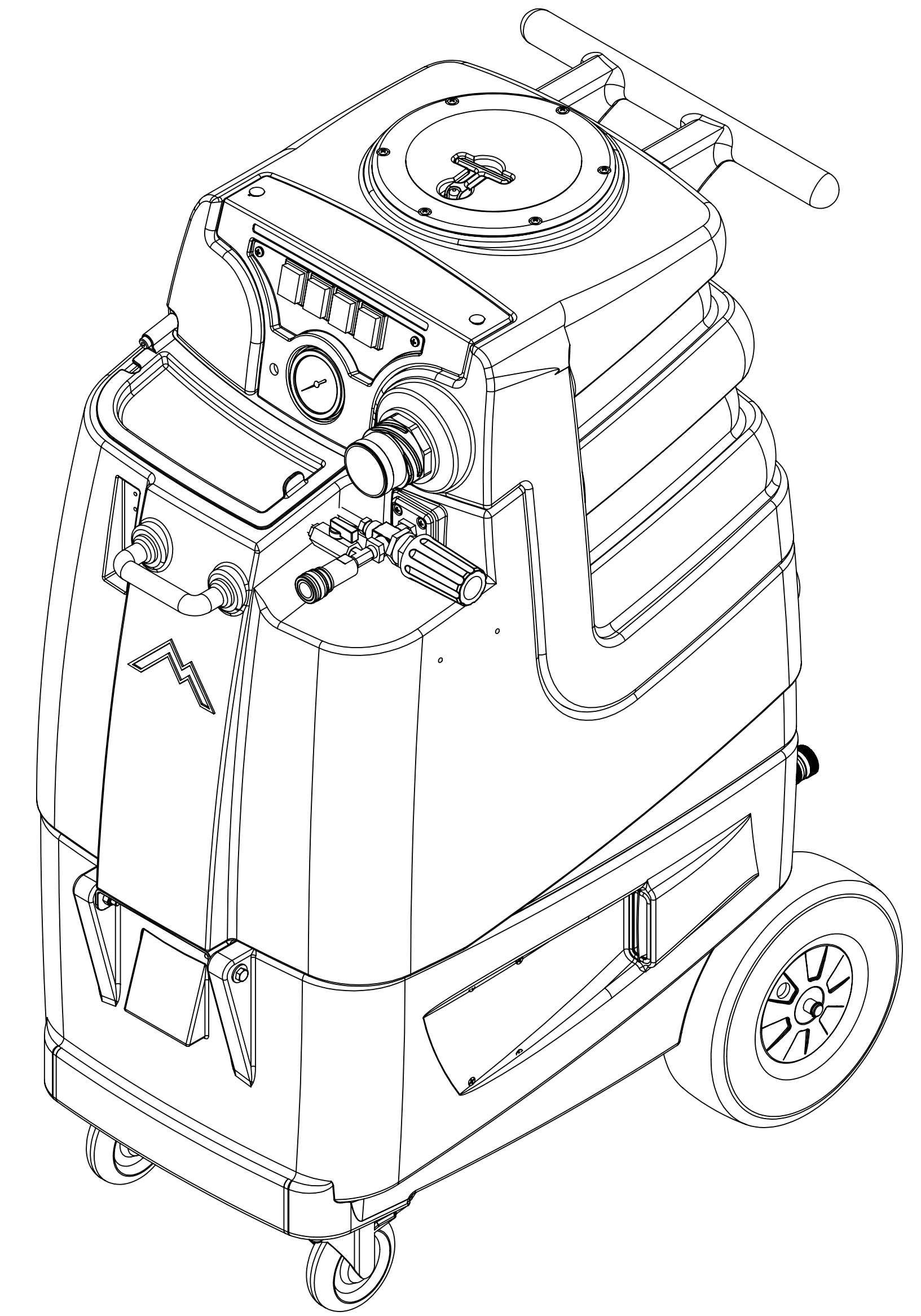


DRAWN	M.LaBarbera	DATE	11/2013	<b>MYTEE PRODUCTS, INC.</b>
CHECKED		TITLE:		
COMMENTS:				<b>speedster</b> SIZE DWG. NO. REV <b>D LTD 5 L</b> SCALE: 1:12 WEIGHT: SHEET 1 OF 3
<small>PROPRIETARY AND CONFIDENTIAL          THE INFORMATION CONTAINED IN THIS DRAWING IS THE SOLE PROPERTY OF MYTEE PRODUCTS, INC. ANY REPRODUCTION IN PART OR AS A WHOLE WITHOUT THE WRITTEN PERMISSION OF MYTEE PRODUCTS, INC. IS PROHIBITED.</small>				



DRAWN	NAME	DATE	MYTEE PRODUCTS, INC.	
CHECKED	M.LoBarbera	11/2013	TITLE:	
COMMENTS:			speedster	
PROPRIETARY AND CONFIDENTIAL			SIZE	DWG. NO.
THE INFORMATION CONTAINED IN THIS DRAWING IS THE SOLE PROPERTY OF MYTEE PRODUCTS, INC. ANY REPRODUCTION IN PART OR AS A WHOLE WITHOUT THE WRITTEN PERMISSION OF MYTEE PRODUCTS, INC. IS PROHIBITED.			D	LTD 5
			SCALE: 1:24 WEIGHT:	REV L
				SHEET 2 OF 3

REVISIONS			
REV.	DESCRIPTION	DATE	APPROVED
OD	ORIGINAL DRAFT	-	JFL
A	-	-	JFL
B	-	-	JFL
C	REPLACED VAC STACK	6/2013	JFL
D	REPLACED G003 W G022	8/2013	JFL
E	REPLACED H033 W H342, ADDED H210 & H216	10/8/2013	JFL
F	G021 REPLACED W G097	10/28/2013	JFL
G	CAT pump	11/8/2013	JFL
H	REPLACED H374 w FERRULE	3/7/2014	ML
I	REPLACED H219 W H042	8/8/2014	ML
J	ADDED B170	9/5/2014	ML
K	REMOVED ELECTRICAL FLOAT	3/9/2016	ML
L	REMOVED CHEMICAL INJECTOR	10/19/2017	ML



DRAWN	NAME	DATE	MYTEE PRODUCTS, INC.	
CHECKED	M.LaBarbera	11/2013	TITLE:	
COMMENTS:			speedster	
<small>           PROPRIETARY AND CONFIDENTIAL            THE INFORMATION CONTAINED IN THIS DRAWING IS THE SOLE PROPERTY OF &lt;INSERT COMPANY NAME HERE&gt;. ANY REPRODUCTION IN PART OR AS A WHOLE WITHOUT THE WRITTEN PERMISSION OF &lt;INSERT COMPANY NAME HERE&gt; IS PROHIBITED.         </small>			SIZE	REV
			D	L
			LTD 5	L
			SCALE: 1:12 WEIGHT:	SHEET 3 OF 3