



Equipos Profesionales de Limpieza

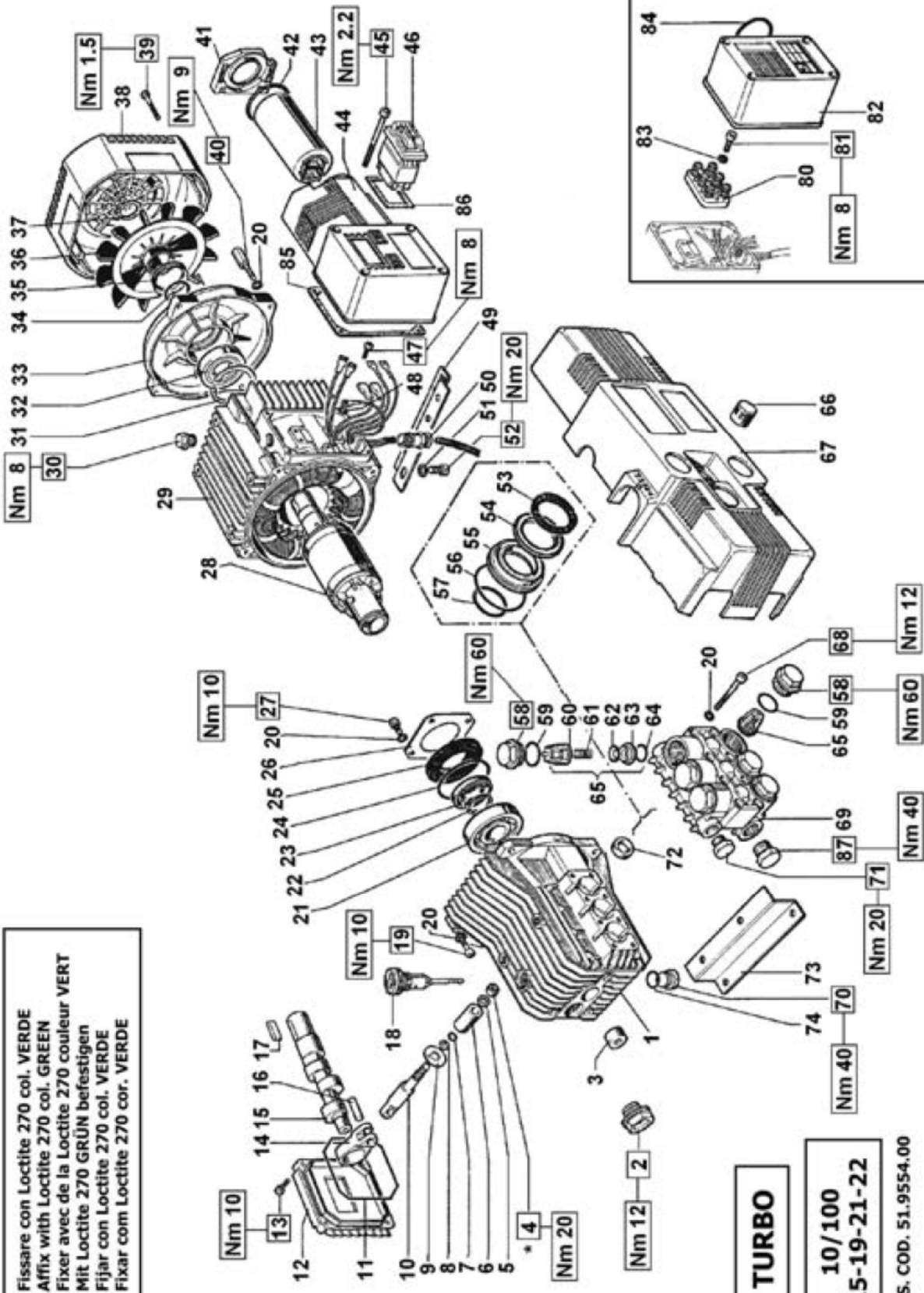
Lista de partes

MODELO: HIDROLAVADORA TURBO 21



Motobomba

- * Fissare con Loctite 270 col. VERDE
- * Affix with Loctite 270 col. GREEN
- * Fixer avec de la Loctite 270 couleur VERT
- * Mit Loctite 270 GRÜN befestigen
- * Fijar con Loctite 270 col. VERDE
- * Fixar com Loctite 270 cor. VERDE



TURBO
10/100
15-19-21-22

DIS. COD. 51.9554.00

KITS DE REPUESTOS

KIT N.	KIT 1	KIT 83	KIT 84	KIT 86	KIT 96	KIT 97
Positions included	60 - 61 62 - 63 64 - (65)	72	58 - 59	55 - 56 57	53 - 54 55 - 56 57	53 - 54 56 - 57
Posizioni incluse						
N. pcs.	6	3	6	3	1	3

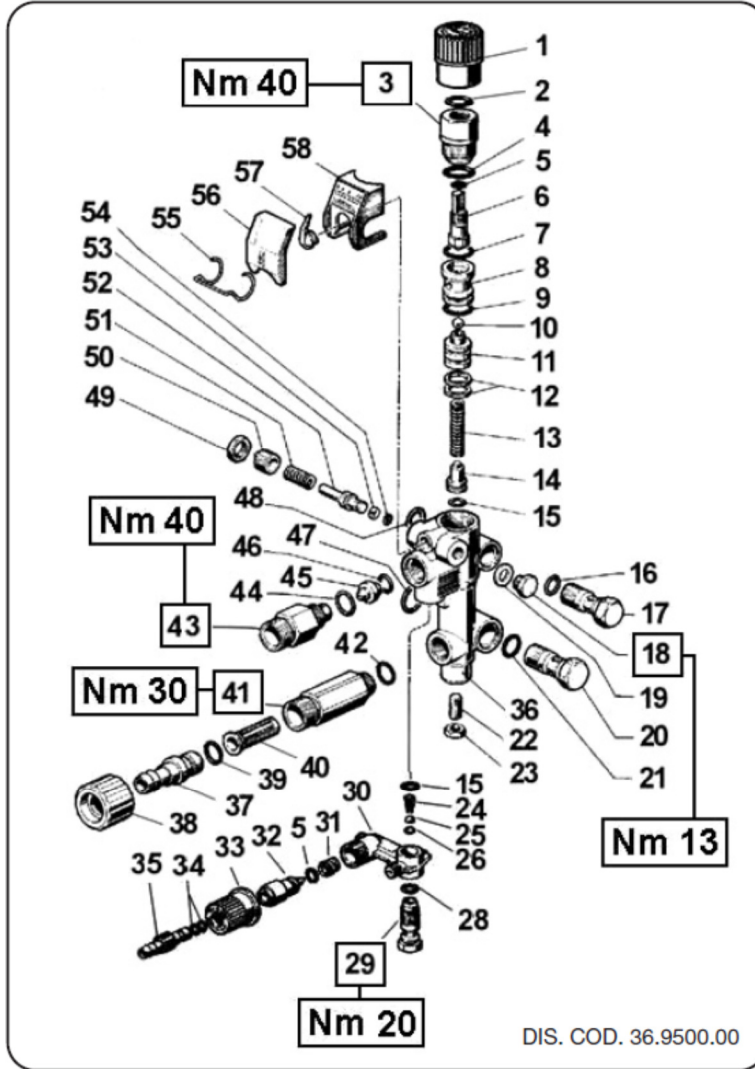
LISTA DE REPUESTOS

POS.	CODE CODICE	N. PCS.	POS.	CODE CODICE	N. PCS.	POS.	CODE CODICE	N. PCS.
1	51.0100.22	1		41.3221.02 - 21	1	53	51.1000.51	3
2	97.5968.00	1		41.3222.02 - 19	1	54	90.2620.00	3
3	91.8014.00	1	29	41.3224.02 - 15	1	55	51.0800.70	3
4	92.2216.00	3		41.3226.02 - 22	1	56	90.3604.00	3
5	44.2115.70	3		41.3227.02 - 10/100	1	57	90.3835.00	3
6	51.0400.09	3		41.3229.02 - 10/100	1	58	98.2218.00	6
7	90.3572.00	3	30	98.2093.00	1	59	90.3847.00	6
8	90.5022.00	3	31	90.0795.00	1	60	36.2002.51	6
9	96.7070.00	3	32	91.8323.00	1	61	94.7376.00	6
10	51.0500.56	3	33	41.0700.22	1	62	36.2001.76	6
11	90.3917.00	1	34	90.3857.00	1	63	36.2003.66	6
12	51.1600.22	1	35	90.1652.00	1	64	90.3841.00	6
13	99.1867.00	4	36	41.0300.51	1	65	36.7032.01	6
14	51.0300.22	3	37	90.0628.00	1	66	52.2122.51	1
	51.0200.35 - 15	1	38	41.0400.51	1	67	51.2103.51	1
15	51.0204.35 - 19 - 21 - 22	1	39	99.1658.00	4	68	99.1943.00	8
	51.0217.35 - 10/100	1	40	41.2104.65	4	69	51.1200.22 - Nickel	1
16	97.7310.00	3	41	41.2120.51	1		51.1200.41	1
17	91.4877.00	1	42	90.3885.00	1	70	98.2100.50	1
18	98.2103.00	1		93.5688.00	1	71	98.2041.00	1
19	99.1897.00	4	43	93.5658.00	1	72	90.1565.00	3
20	96.6938.00	20		93.5694.00	1	73	51.2002.74	1
21	91.8328.00	1	44	41.2124.51	1	74	90.3833.00	1
22	90.0635.00	1	45	99.1705.00	4	80	93.5745.00	1
23	90.1634.00	1		93.5031.00	1	81	99.1537.00	2
24	90.4097.00	1	46	93.5027.00	1	82	41.2122.51	1
25	50.2115.51	1		93.5070.00	1	83	96.6910.00	2
26	50.1500.74	1	47	99.1515.00	1	84	90.3889.00	1
27	99.1807.00	4	48	96.6913.00	1	85	41.2101.47	1
	41.3403.02	1	49	51.2003.74	1	86	41.2126.84	1
	41.3407.02	1	50	93.5210.00	1	87	98.2100.00	1
28	41.3406.02	1	51	96.7014.00	4			
	41.3408.02	1	52	99.3037.00	4			

By-pass

KIT N.	KIT 94	KIT 95 (KR1-2)	KIT 99 (KR 90-92-100)
Positions included	5-15-24-25-26-28 31-34-44-46	2-4-5-7-8-9-10-12 13-15-16-21-39-42 47-48-53-54	2-4-5-7-8-9-10-12 13-15-16-21-39 42-47-48-53-54
Posizioni incluse			
N. pcs.	1	1	1

KR 1 - KR 2 - KR 90 - KR 100



*** TABLE «A» - TABELLA «A»				
MOD.	POS.	CODE CODICE	N. PCS.	FOR PUMPS PER POMPE
KR1	11	36.2572.70	1	TURBO 8-70 - TURBO 15 TURBO 19 - TURBO21
	45	10.0307.51	1	
KR2	11	36.2553.70	1	TURBO 11-50 TURBO 11-70
	45	10.0151.66	1	
KR90	11	36.2572.70	1	TURBO 8-90
	45	10.0307.51	1	
KR100	11	36.2595.70	1	TURBO 10-100
	45	10.0151.66	1	

POS.	CODE CODICE	N. PCS.
1	36.2583.51	1
2	90.3835.00	1
3	36.2556.70	1
4	90.3847.00	1
5	90.3580.00	2
6	36.2574.02	1
7	90.3598.00	1
8	36.2554.66	1
9	90.3596.00	1
10	97.4802.00	1
11	TABLE «A» ***	
12	90.5080.00	2
13	94.7344.00	1
14	36.2552.70	1
15	90.3582.00	2
16	90.3820.00	1
17	36.2567.70	1
18	98.1966.00	1
19	96.7100.00	1
20	36.2568.70	1
21	90.3827.00	1
22	99.3054.00	1
23	92.2218.00	1
24	94.8217.00	1
25	97.4782.00	1
26	90.3572.00	1
28	90.3585.00	1
29	36.2563.70	1
30	36.2562.51	1
31	94.7383.00	1
32	36.2564.70	1
33	36.2565.51	1
34	90.3570.00	2
35	36.2566.70	1
	36.2582.41	1
36	36.2588.41 - KR90-92-100	1
37	36.2569.70	1
38	10.0119.02	1
39	90.3828.00	1
40	92.8925.00	1
41	36.2560.70 - M22x1,5 36.2584.70 - 1/2 NPT	1
42	90.3591.00	1
43	10.0147.70 - M22x1,5 10.0318.70 - 3/8 NPT	1
44	90.3832.00	1
45	TABLE «A» ***	1
46	90.3822.00	1
47	90.3839.00	1
48	90.3833.00	1
49	92.2492.00	1
50	36.2580.70	1
51	94.7338.00	1
52	36.2579.70 - KR1-2 36.2589.70 - KR90-92-100	1
53	90.5007.00 - KR1-2 90.5004.00 - KR90-92-100	1
54	90.3568.00 - KR1-2 90.3567.00 - KR90-92-100	1
55	94.8718.00	1
56	36.2577.51	1
57	36.2578.51	1
58	36.2586.01 - KR1-KR2 36.2590.01 - KR90-92-100	1